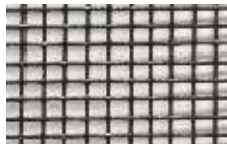


Standard Fiberglass Insect Screen. This insect screening is the least expensive and most common material found in window and door screens. It offers good ventilation and insect protection.

18 x 16 mesh .011" wire diameter

Charcoal



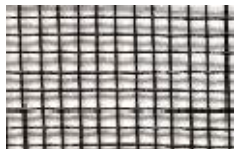
Gray



BetterVue Improved Visibility Insect Screen (iVis) has 20% better airflow and optical clarity and 10% better insect protection than a standard screen. It is Greenguard certified and infused with Microban protection. It can be installed in window and door screens as well as in porches.

20 x 20 mesh .008" wire diameter

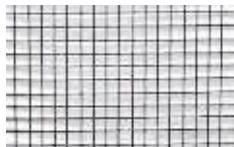
Black



UltraVue excellent visibility insect screen (eVis) provides 25% better airflow and optical clarity and 30% better insect protection. It is greenguard certified and infused with Microban. This material is typically installed in window screens to maximize visibility.

18 x 18 mesh .008" wire diameter

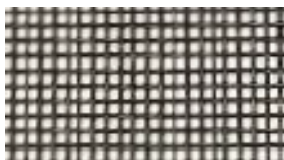
Black



SuperScreen is a heavy-duty insect screening that is suitable for high-traffic areas, patios, enclosures, windows, and doors. It is three times stronger than standard insect screening.

17 x 14 mesh and .014" wire diameter

Black



PetScreen is a vinyl coated polyester screening designed to be pet resistant. PetScreen is tear and puncture resistant and ideal for high traffic areas. It offers excellent outward visibility and ventilation and is not harmful to pets.

15 x 10 mesh and .025" wire diameter

Black



Gray



Aluminum Wire is a weather-resistant screening that offers good ventilation and protects against insects. This mesh is more durable than standard fiberglass screening.

18 x 16 mesh and .011" wire diameter

Charcoal



Black



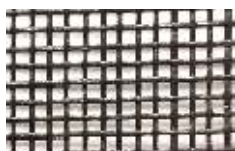
Bright / Silver



No-see-um is a mesh that offers good ventilation. No-See-Um's tighter mesh is designed to protect against small insects and is generally used in Pool, Patio, and Porch enclosures or for larger openings. It may also be installed in window and door screens.

20 x 20 mesh and .013" wire diameter

Charcoal



Gray



Tiny Mesh Super Screen is a mesh used to control the tiniest of insects. It is a heavy duty vinyl coated polyester. It is designed for extra strength and durability and for large openings to 120" width.

17 x 20 mesh and .014" wire diameter

Black



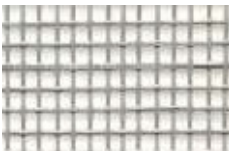
Fiberglass Pool & Patio is a mesh that offers a stronger screening for larger openings. Pool & Patio protects from insects while maintaining good ventilation. This material meets the Florida building code for pool and patio enclosures.

18 x 14 mesh and .013" wire diameter

Charcoal



Gray



Solar Insect Screening blocks 65% of the sun's rays. Solar Insect Screening is GreenGuard and GreenGuard Children & Schools certified and is lead free. This material keeps out tiny insects and helps block the sun. This material can be installed anywhere standard screening is installed.

20 x 30 mesh and .014" wire diameter

Charcoal



Gray



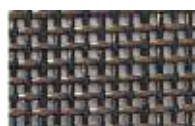
SunTex 80 is a heavy duty, pet resistant screening with 80% sun blockage.

16 x 14 mesh and .025" wire diameter

Black



Dark Bronze



Brown



Gray



Tan



Stucco



SunTex 90 is a heavy duty, pet resistant screening with 90% sun blockage.

20 x 18 mesh and .025" wire diameter

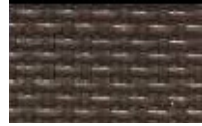
Black



Dark Bronze



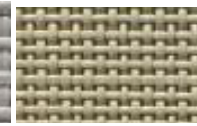
Brown



Gray



Tan



Stucco

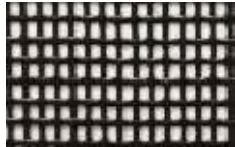


Florida Glass / Glas-Shield is a 18X14 fiberglass mesh that has been vinyl laminated.

Glas-Shield functions as a privacy screen and is designed to keep debris out of enclosure areas.

18 x 14 mesh and .013" wire diameter

Charcoal



SeeVue is a stainless steel insect screen that offers excellent visibility and protects against insects. SeeVue is durable and excellent for porches. This screen material is not recommended for coastal areas exposed to salty air.

18 x 18 mesh and .007-.0075" wire diameter

Black



Copper / Bronze Screen is a specialty metal screening that provides strength and durability while offering an architecturally pleasing alternative to traditional screens. Bronze Screen is made of 90% Copper and 10% Zinc and weathers to a beautiful bronze finish. It effectively protects against insects, is resistant to salty air, and will not oxidize like aluminum screening.

18 x 14 mesh and .011" wire diameter

Copper

